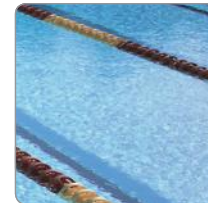
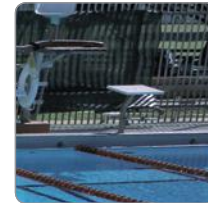


“PAL” – the portable aquatic lift, safely transfers patrons into and out of the pool at any location.



Whether outdoors or indoors, PAL is an easy to move mobile lift to greatly improve patron mobility.

Area of Application

- **PAL – Portable Aquatic Lift, is the only mobile aquatic lift with power rotation, lifting and lowering. The simple and reliable use makes it perfect for independent transfers into and out of the pool!**
[max. weight capacity 136 kg]

Always where it's needed – PAL

- Pool patrons can use the lift unassisted, gaining the highest possible mobile independence.
- **The easy to use manual switch allows independent transfers into and out of the water.**
- The design features allow the PAL to be used in any pool without the need for construction.
- No fixed installation, always available where it's needed.
- The removable rechargeable battery pack allows continuous use. No power cable required.
- The seat was designed specifically for persons with limited mobility and provides the user with stability during all transfer stages.
- The »Stability Vest« ensures safe transfers.

Three different models

PAL Portable Aquatics Lift is available in these models:

- **PAL** Standard Portable Aquatic Lift
- **PAL Hi-Lo** for use in pools with railing and/or level pools
- **PAL Spa** for pools with railing up to 130 cm high

...for any need

Features

Standard equipment includes:

- Universal seat with flip-up arm rests
- Safety strap
- Removable battery
- Battery charger

Lift, rotate, lower – patrons can use the lift system independently.



➔ other AquaKonzept aquatic lifts: **aXs** and **splash**

PAL / PAL Hi-Lo / PAL Spa	
■ Weight	408 kg, incl. seat and battery case
■ Safe lifting capacity	136 kg
■ Rotation range	240° rotation – 24 VDC, actuator: gearing ratio 9:1
■ Lifting cycles	30 transfers of 136 kg load at maximum battery capacity
■ Supply voltage	Removable rechargeable battery 24V/2.9Ah / charger 110–220 VAC, 50–60 Hz
■ Lifting/lowering actuator	LINAK LA 34, mechanical spindle drive
■ Control	Corded manual control waterproof [IP67], optional cordless remote control [hand-held transmitter waterproof]
■ Installation	No installation required – mobile transfer assist
■ Material	Powder-coated stainless steel, aluminium, ABS plastic, moulded plastic parts
■ CE mark	According to EC directive 93/42/EEC - EN ISO 10535:2006 (D)
■ Medical device	Class 1

Our product line:

Prophylaxis equipment Therapy equipment Patient lifts **Aquatic lifts** Physical therapy equipment Transport equipment

Subject to technical and design changes without prior notice.
Colours may differ from the actual colours due to the printing process.

Questions? We're here to assist you:

RMT RehaMed Technology GmbH

Waldstraße 66a | 63128 Dietzenbach | Postal address: Postfach 1101 | D-63111 Dietzenbach
Tel. +49 (0) 60 74 / 82 13 0 | Fax +49 (0) 60 74 / 82 13 20 | info@rmt.eu | www.rmt.eu

