

## Starting Block Malmsten Classic

Classic is our traditional model, which suits a more narrow pool edge.

The internationally renowned Malmsten starting block is used all over the world and is truly appreciated by not only swimmers, but also trainers and functionaries. It is easy to climb up on, offers an effective anti-slip surface and is accessible from the sides.

### Unique qualities:

Well known, stable and offered at a favorable price  
 Stainless steel 316L – protective paint added  
 Effective anti-slip surface  
 Prepared for Track Start (sold separately)



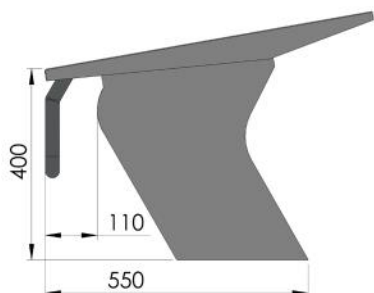
### Colors and dimensions:

Height is usually 400 mm. Alternatives can nevertheless be ordered; 350 or 300 mm. The top measures 500x700mm. The top is usually blue but can be ordered in alternative colors (at an extra cost).



## Starting block including top and base

- Height is usually 400 mm. Alternatives can nevertheless be ordered; 350 or 300 mm.
- Suitable for elevated pool edge or OF platform, article no. 2011004\*
- Suitable for pool edge of 300-500mm. For pool edge wider than 300 mm, it is recommended Starting block Pro Malmsten, article no. 2011002
- Starting blocks are numbered 0-9; please confirm preferred number(s) when placing the order



### Toppen

- It is prepared for installation of Track Start, article no. 2011024\*
- The top measures 500x700mm; effective anti-slip surface is included
- The anti-slip surface is usually blue, but can be ordered in an alternative color (at an extra charge)
- Relay judging plate can be installed; max surface is 450x480mm

### Base

- Has an opening where electronic equipment may be placed which can be used during competition
- If the base is placed on a tiled pool edge a protective plate is recommended to be placed in between, article no. 2018007, is ordered (free of charge)

\* sold separately

Artikel nr 2011033



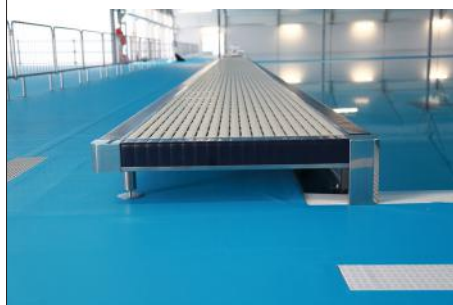
Starting block Malmsten Classic with Track Start

## Accessories Sold Separately:

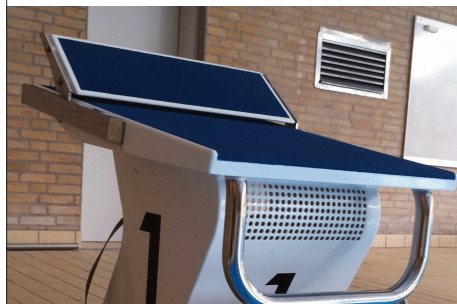
Backstroke starting device,  
article no. 1910054



OF platform,  
article no. 2011004



Track start,  
article no. 2011024



Maintenance kit for stainless steel,  
article no. 2018010



The starting block is made in accordance with EN-standards and FINA norms for starting blocks; as long as these guidelines for pool depth, pool edge and safety are being followed and installation instructions are respected.